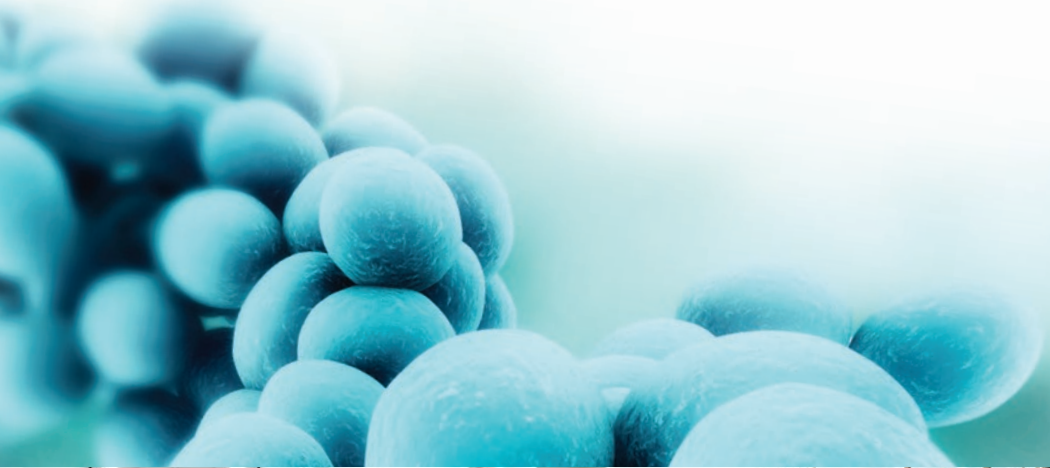




Deflecta[®]
concrete bacteria control



Antimicrobial

APVMA Approval No: 60195/56867

Suitable for: All concrete areas requiring bacterial protection

Bacteria Control

SITE APPLICATIONS





DEFLECTA ANTIMICROBIAL

How it Works

**START
TIME**



Apply Antimicrobial to concrete

Spray Antimicrobial onto a clean surface to start activation



Biocide activates within 5 minutes of touching the concrete surface

The biocide chemically penetrates through the concrete killing bacteria and other pathogens as formation commences

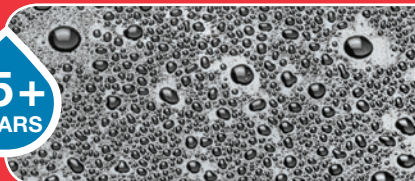


The bacteria Kill Rate is 99.99% @ 24 hours after application

Kills bacteria's such as E.Coli, Golden Staph, Listeria and Salmonella



Active for 5 years + for DEFLECTA ANTIMICROBIAL biocide treatment



Internal Moisture Protection is warranted for 15 years



How to Apply

DEFLECTA ANTIMICROBIAL

1 Product profile. Prior to application refer to product back label or technical data sheet for more detailed information



2 Shake/mix product well



3 Pour product into spray equipment



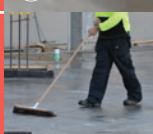
4 Hydrate area with water and wait until absorbed



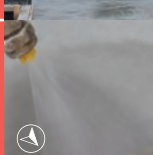
5 **First Coat:** Apply product in one direction with overlay spray pattern to clean surface.
Floor Application = 4.5m² per Ltr
Apply: Low to medium pressure
Wall Application = 4.5m² per Ltr
Apply: Medium to high pressure



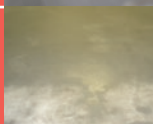
6 **First & Second Coats:**
If pooling/puddling occurs after 30mins on surface, broom or mop out



7 **Second Coat:**
Apply product before first coat dries and at 90° to the first coat



8 If discolouration occurs after 30mins on surface, remove with water and broom or squeegee



9 Clean equipment after use



Do not store in direct sunlight or high temperatures

Major CONCERNS where bacteria lies within concrete threatens:



Hospitals



Agriculture



Aged and child care facilities



Animal husbandry



Sporting



Water and sewerage sectors



Food processing/manufacturing



Cattery and dog kennels

BENEFITS include:



Certified and Registered by the Australian Government (APVMA) Approval No. 60195/56867



Kills disease carrying bacteria such as:

- Staphylococcus aureus (Golden Staph)
- Listeria
- Escherichia coli (E.Coli)
- Salmonella



Zero Volatile Organic Compounds / Volatile Organic Solvents



Water based and non-toxic to humans or animals



Removes odour from concrete



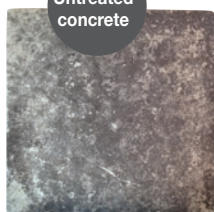
100% bio-degradable



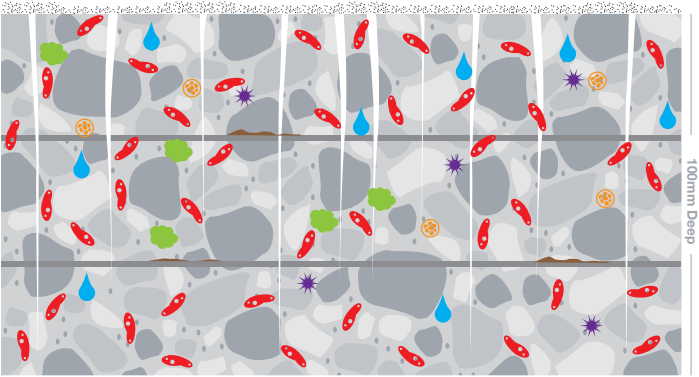
Approved by HACCP & The Australian Water Quality Centre

Untreated concrete

ANTIMICROBIAL treated concrete after 5 years + in weathered conditions



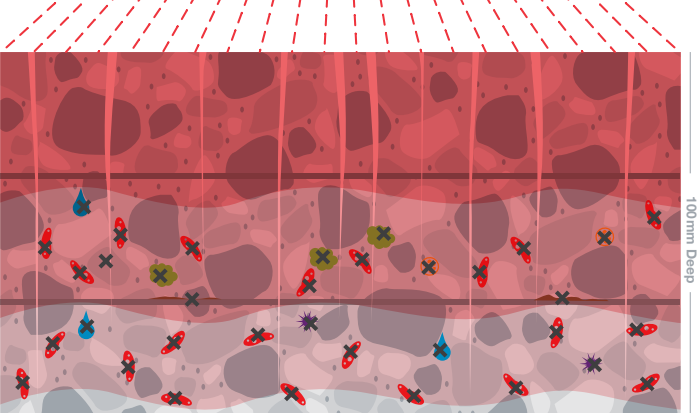
Concrete BEFORE Treatment



KEY

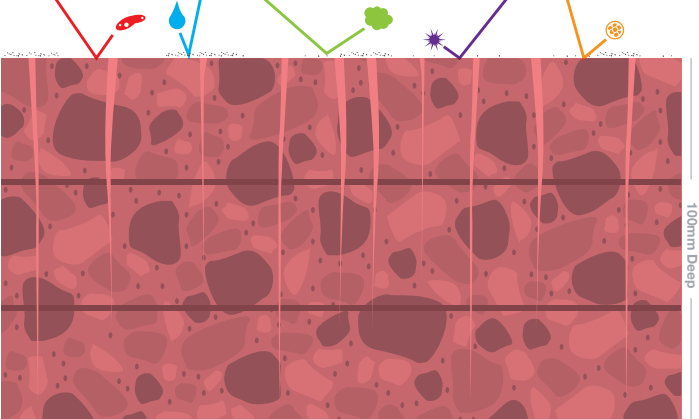
- Concrete**
- Concrete Pores
 - Concrete Capillaries
 - Steel Reinforcing
- Unwanted Substances**
- Bacteria
 - Moisture
 - Surface Dusting
 - Salts, Efflorescence + Acids
 - Chloride Ions + Corrosives
 - Gas + Vapours
 - Corrosion + Cancer

Concrete DURING Treatment



Antimicrobial is applied to the surface and kills harmful bacteria.

Concrete AFTER Treatment



Bacteria is killed for 5 years plus. Steel reinforcement bars, concrete pores and capillaries are protected for 15 years.



Gold Coast University Hospital



Box Hill Hospital



Waterfront City ING Carpark – Docklands



Royal Women's Hospital Melbourne

Deflecta Crete Seals head office is located in Melbourne with representation in Queensland, New South Wales, South Australia, Tasmania, Western Australia, China and Hong Kong.

Through research and development, we produce a wide range of products manufactured in Australia for both local and overseas markets.

We have invested heavily in research and development which has resulted in a world first product with technology developed in Australia—DEFLECTA ANTIMICROBIAL. With this knowledge, we have specialised expertise to work with customers to develop specific solutions for specific problems.



e: info@deflecta.com.au

t: +61 (3) 9318 9315

f: +61 (3) 9318 0851

150 Proximity Drive
Sunshine West, 3020
Victoria, Australia

www.deflecta.com.au

© Deflecta Crete Seals



AUST-A-B / V2.0